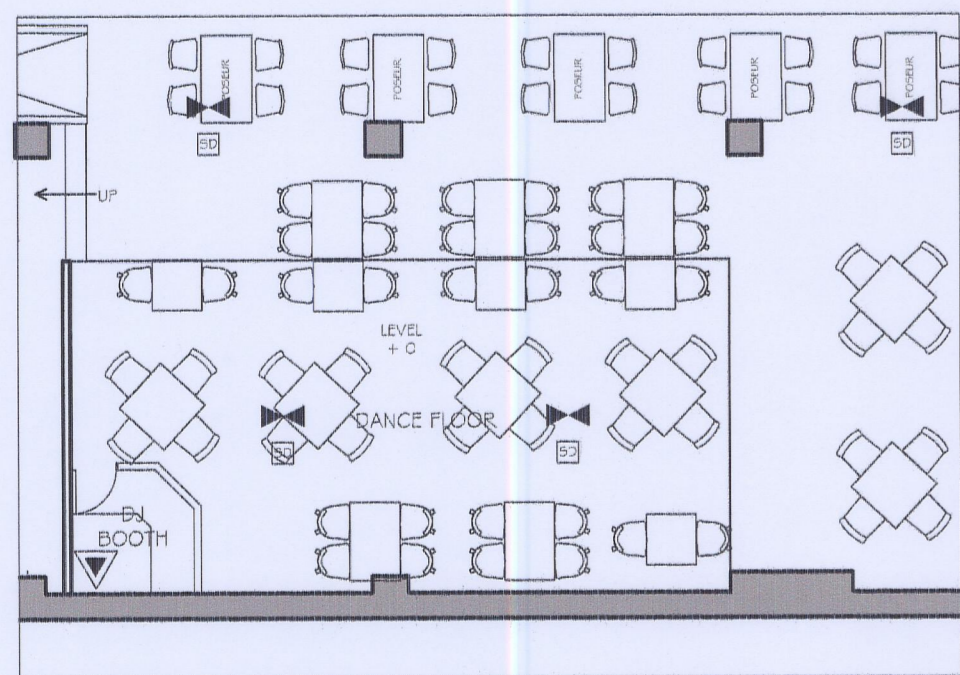
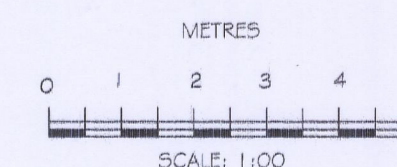
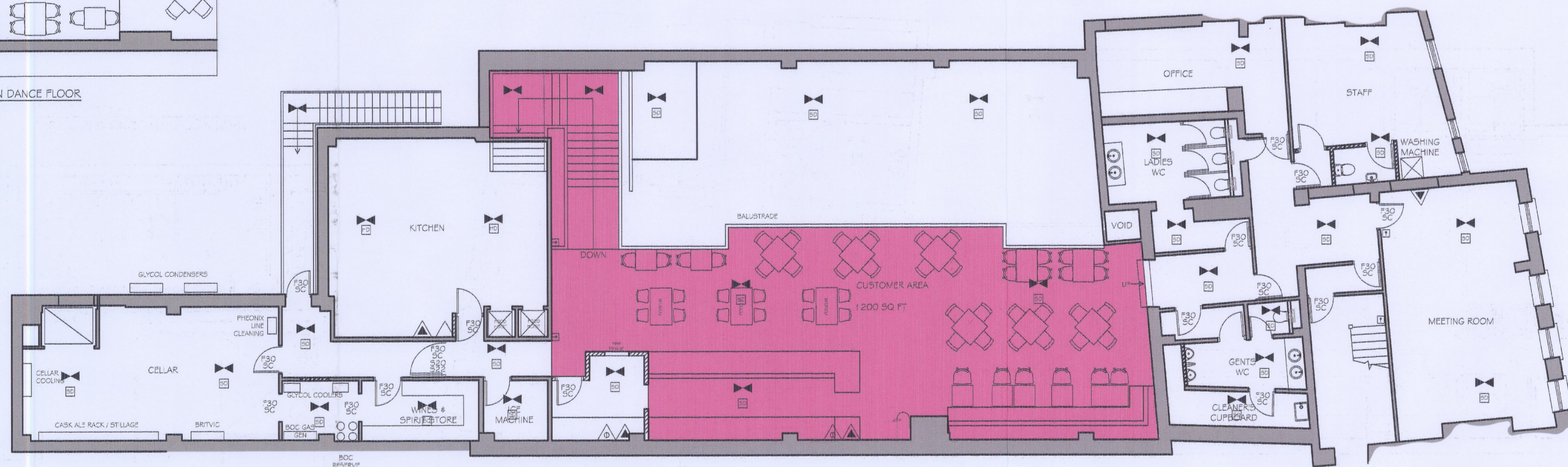


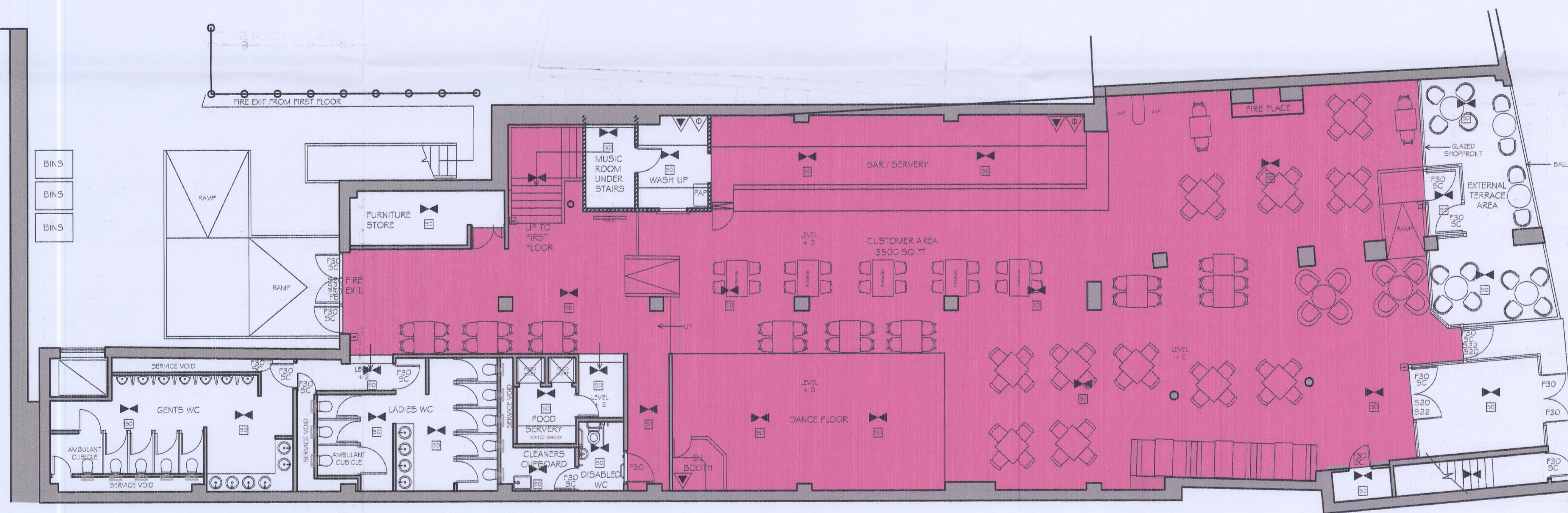
NOTE - Responsibility is not accepted for errors made by others in scaling from this drawing. All construction information should be taken from figured dimensions only



DAYTIME FURNITURE LAYOUT ON DANCE FLOOR



PROPOSED FIRST FLOOR PLAN
SCALE 1:100



PROPOSED GROUND FLOOR PLAN
SCALE 1:100

ALL WALLS AND PARTITIONS TO BE MINIMUM HALF HOUR FIRE RESISTANCE.
EMERGENCY LIGHTING TO COMPLY WITH 2005 EDITION OF BS 5266 PART 1.
FIRE SAFETY RELATED SIGNS AND NOTICES TO COMPLY WITH THE HEALTH AND SAFETY (SAFETY SIGN AND SIGNAL) REGULATIONS 2005
FIRE ALARM AND DETECTION SYSTEM TO BE INSTALLED TO BS 5839 PART 1 2002
FIRE FIGHTING EQUIPMENT TO COMPLY WITH BS 5306 WALL AND CEILING LININGS ARE TO BE CLASS 1 SURFACE SPREAD OF FLAME (AS DEFINED BY BS 476 PART 7) IN PUBLIC AREAS AND CLASS 0 IN ESCAPE ROUTES.
UPHOLSTERED SEAT FURNITURE TO SATISFY THE FOLLOWING
* IGNITION SOURCE (CIGARETTE TEST) AS SPECIFIED IN BS 5852 PART 1 FIRE TEST FOR FURNITURE METHODS OF TEST FOR THE IGNITABILITY BY SMOKERS.
* BS 5852 PART 2 FIRE TEST FOR FURNITURE METHODS OF TEST FOR THE IGNITABILITY OF UPHOLSTERED COMPOSITES FOR TESTING BY FLAMING SOURCE, MINIMUM TEST TO BE CRIB IGNITION SOURCE 5.
FABRICS THAT HAVE HAD A FLAME RETARDANT TREATMENT TO PASS THE WATER SOAK TEST AS DEFINED BY BS 5651 TEST CERTIFICATE TO BE SUBMITTED TO FIRE AUTHORITY.
CURTAINS AND DRAPES TO SATISFY TYPE B PERFORMANCE REQUIREMENTS TO BS 5667 PART 2.
ARTIFICIAL FOLIAGE AND DECORATIVE EFFECTS TO BE FIRE RETARDANT TO THE SATISFACTION OF THE FIRE AUTHORITY.

AREA FOR REGULATED ENTERTAINMENT/ SALE BY RETAIL OF ALCOHOL/ PROVISION OF LATE NIGHT REFRESHMENT
 INDICATES TIMBER DANCE FLOOR

LEGEND:

GROUND FLOOR AREA:	5377 SQFT / 499 SQM
FIRST FLOOR AREA:	5626 SQFT / 522 SQM
TOTAL AREA:	11005 SQFT / 1021 SQM
KITCHEN:	475 SQFT / 44 SQM
CELLAR 1:	356 SQFT / 33 SQM
CELLAR 2:	81 SQFT / 7 SQM
TOTAL CELLAR:	437 SQFT / 40 SQM
DANCE FLOOR:	291 SQFT / 27 SQM
GROUND FLOOR WASH UP:	76 SQFT / 7 SQM
FIRST FLOOR WASH UP:	79 SQFT / 7 SQM
EXTERNAL TERRACE AREA:	270 SQFT / 25 SQM
DANCE FLOOR:	483 SQFT / 44 SQM
GROUND FLOOR CUSTOMER AREA:	3500 SQFT / 325 SQM
FIRST FLOOR CUSTOMER AREA:	1200 SQFT / 111 SQM
TOTAL CUSTOMER AREA:	4700 SQFT / 463 SQM

- | | | | |
|---|--|--|----------------------------------|
| F20 TWENTY MINUTE FIRE RESISTANT WITH SMOKE SEALS AND INTUMESCENT STRIP | ILLUMINATED EMERGENCY FITTING WITH RUNNING PERSON SYMBOL+ARROW | AREA COVERED BY ESCAPE LIGHTING TO BS 5266, PART 1 | CARBON DIOXIDE FIRE EXTINGUISHER |
| F30 HALF HOUR FIRE RESISTANT WITH SMOKE SEALS AND INTUMESCENT STRIP | NON MAINTAINED EMERGENCY FLOODLIGHTING C/W BATTERY PACK | AREA COVERED BY SMOKE DETECTOR | 9 LITRE WATER FIRE EXTINGUISHER |
| F60 ONE HOUR FIRE RESISTANT WITH SMOKE SEALS AND INTUMESCENT STRIP | 913 "FIRE DOOR KEEP SHUT" 10mm LETTERS TO BOTH SIDES OF DOOR LEAF | AREA COVERED BY HEAT DETECTOR | DRY POWDER FIRE EXTINGUISHER |
| VP VISION PANEL | 914 "FIRE DOOR KEEP LOCKED" 10mm LETTERS TO BOTH SIDES OF DOOR LEAF | FIRE ALARM CALL POINT | FOAM FIRE EXTINGUISHER |
| PP PANIC PAD | 920 "FIRE ESCAPE KEEP CLEAR" 10mm LETTERS TO BOTH SIDES OF DOOR LEAF | FIRE ALARM CONTROL PANEL | FIRE BLANKET |
| PB PANIC BAR | 922 RUNNING PERSON SYMBOL+ARROW | FIRE ALARM BELL/SOUNDER | |
| SC SELF CLOSING | 925 "PUSH BAR TO OPEN" 20mm LETTERS | CARBON DIOXIDE FIRE EXTINGUISHER | |
| SCA SELF CLOSING AUTOMATIC RELEASE | 926 DIRECTIONAL ARROW (GREEN) | | |
| FL FUSIBLE LINK | FRG FIRE RESISTING GLAZING ELEMENT | | |
| DS DOOR SELECTOR | | | |

K d paine & associates ltd
architectural & construction consultants
project managers interior designers
Adu Business Centre Little High Street,
Shoreham by Sea, West Sussex, BN43 5EG.
t: +44 (0)1273 467518 f: +44 (0)1273 467520
e-mail: info@kdpaine.co.uk

CLIENT	JD WETHERSPOON PLC	
PROJECT	PUB NO: 6403 FORMERLY CHICAGO ROCK NEWBURY	
DRAWING	PROPOSED GROUND AND FIRST FLOOR LICENSING PLANS	
SCALE	DATE	DRAWN
1:100 @A1	APR 2010	AJM
PROJECT No	DRAWING No	REVISION
6579	L-02	